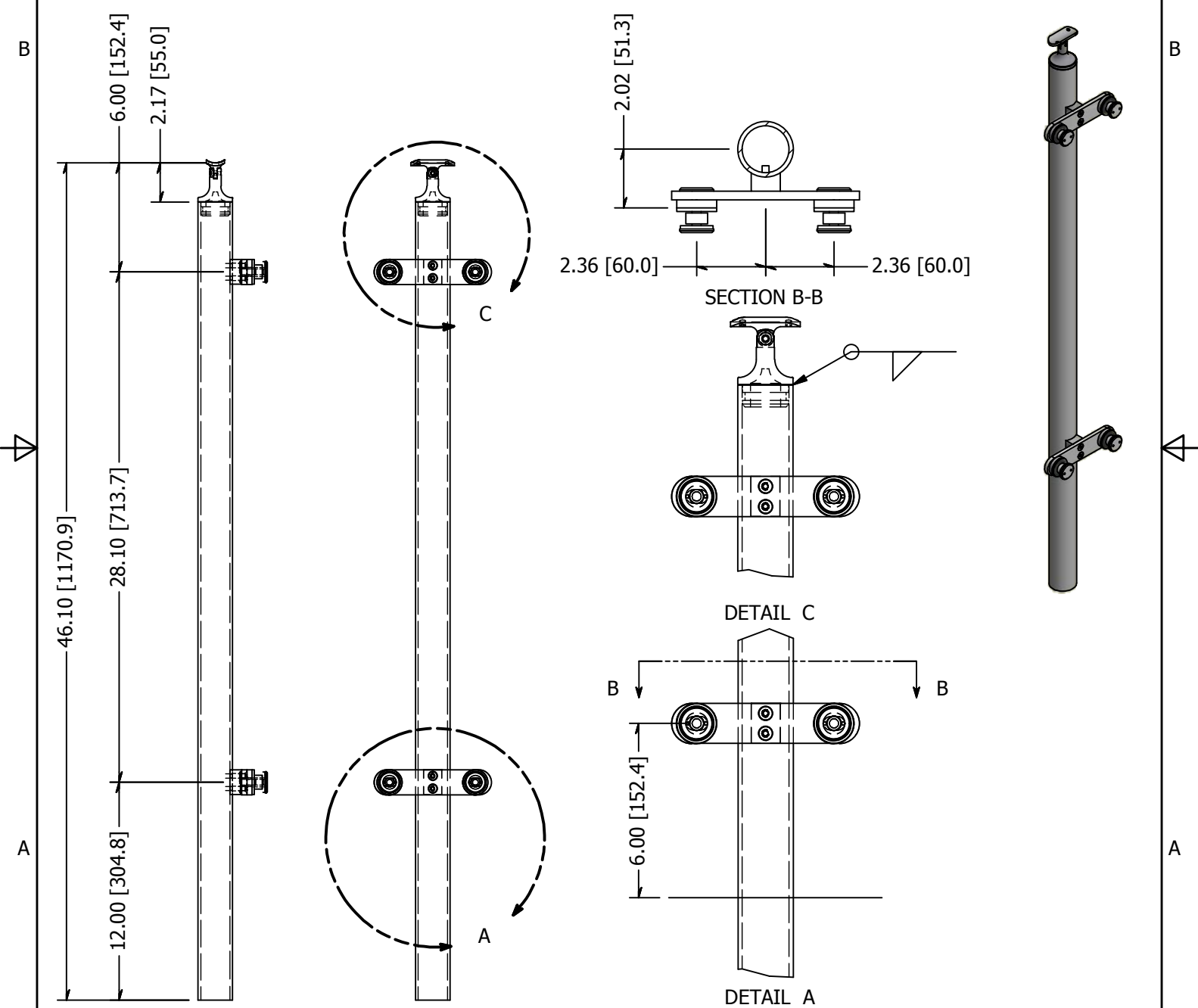




PARTS LIST

ITEM	QTY	PART NUMBER	DESCRIPTION
1	1	LG31942FEMA	Post, Stainless Steel, 1-1/2 Inch Pipe (1.90 OD) Sch 40, 42 High, Brushed Satin Finish, Grade 316, Embed Mount, Post Assembly
2	2	LXFP30-2	Point Fitting, Stainless Steel, 30 mm Head, 2 Point, Flat Plate, Brushed Satin Finish, Grade 316, 0.50 Inch Glass
3	2	LXFP30-1.90	Point Fitting, Stainless Steel, 1.90" OD Adapter, Brushed Satin Finish, Grade 316, 0.50 Inch Glass
4	4	FAH3NM06C-0030	Screw, Stainless Steel, M6-1.0 x 30mm, Socket Flat Head Machine Screw, A4-70
5	1	SS507	SADDLE, SWIVEL, CAST W/ HOLES



TOLERANCE X.X..... = ± .060 X.XX..... = ± .030 X.XXX..... = ± .010 XX°..... = ± 1° UNLESS OTHERWISE NOTED	MATERIAL:	316 Stainless			DESCRIPTION:	Intermediate Post, Stainless Steel, 1-1/2 Inch Pipe (1.90 OD) Sch 40, 42 High, Brushed Satin Finish, Grade 316, Embed Mnt, Flat	
	FINISH:	Satin Brushed		DATE:	4/20/2015	REV:	1
	WEIGHT:	13.64 lbmass		DRAWN BY:	T. Kolbach		
					ITEM NUMBER:	LG31942DMEM.4	
						WAGNER COLLABORATIVE METAL WORKS	

