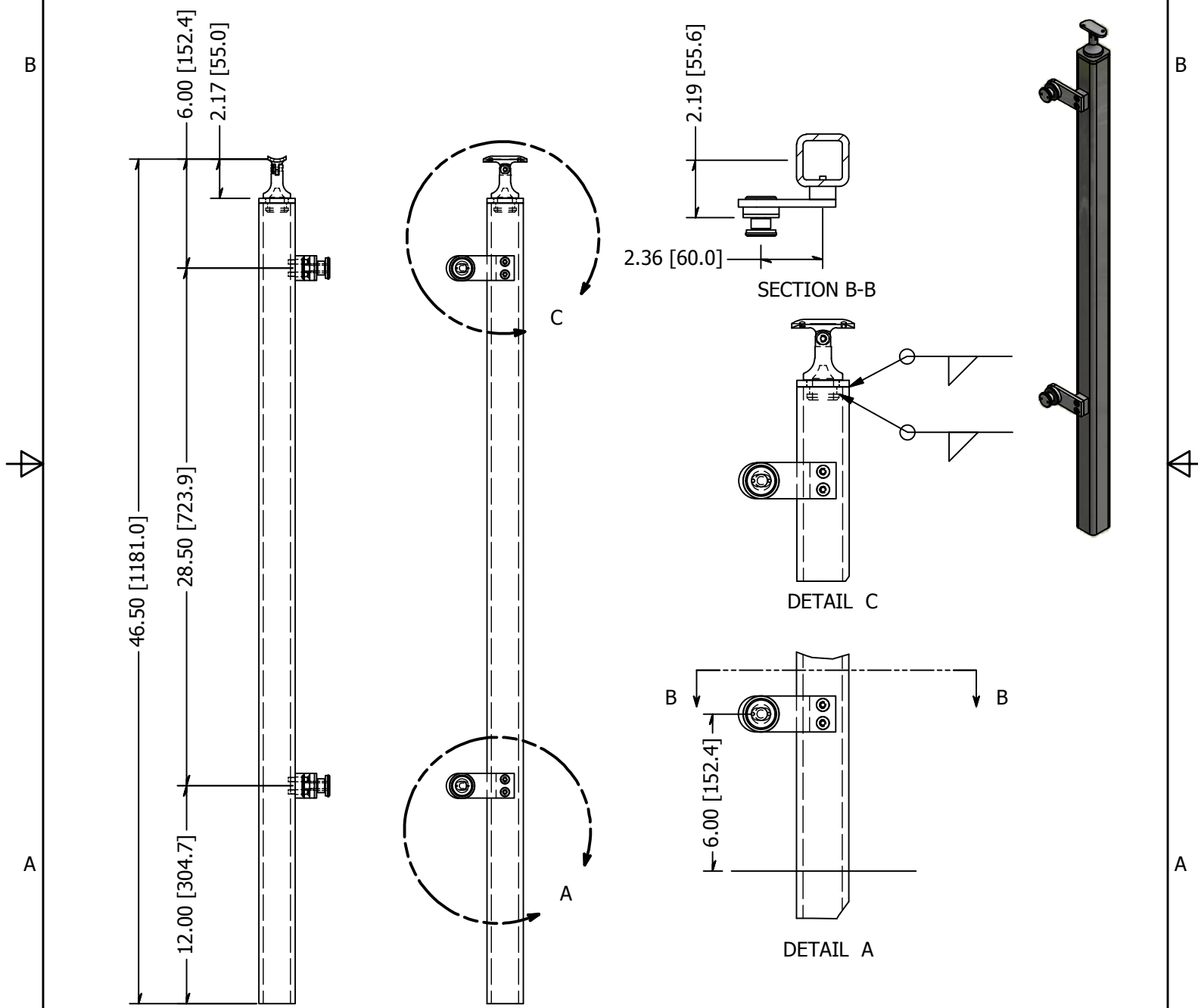




PARTS LIST

ITEM	QTY	PART NUMBER	DESCRIPTION
1	1	LG32242FEMA	Post, Stainless Steel, 2.00 Inch Square x 0.25 Inch Wall, 42 High, Brushed Satin Finish, Grade 316, Embed Mount, Post Assembly
2	2	LXFP30-1	Point Fitting, Stainless Steel, 30 mm Head, 1 Point, Flat Plate, Brushed Satin Finish, Grade 316, 0.50 Inch Glass
3	2	LXFP30-FLAT	Point Fitting, Stainless Steel, Flat Adapter, Brushed Satin Finish, Grade 316, 0.50 Inch Glass
4	4	FAH3NM06C-0030	Screw, Stainless Steel, M6-1.0 x 30mm, Socket Flat Head Machine Screw, A4-70
5	1	SS507	SADDLE, SWIVEL, CAST W/ HOLES



<p>TOLERANCE</p> <p>X.X..... = ± .060</p> <p>X.XX..... = ± .030</p> <p>X.XXX..... = ± .010</p> <p>XX°..... = ± 1°</p> <p>UNLESS OTHERWISE NOTED</p>	MATERIAL:	DESCRIPTION:		<p>WAGNER</p> <p>COLLABORATIVE METAL WORKS</p>
	316 Stainless	DATE:	REV:	
	FINISH:	4/20/2015	1	
	Satin Brushed	DRAWN BY:	T. Kolbach	
WEIGHT:	ITEM NUMBER:			
23.67 lbmass	LG32242DEEM.4			

